

EMPOWERING COMMUNITIES: A HOLISTIC APPROACH TO TACKLING GENERATIONAL CHILD POVERTY

Eurochild Convention, Malta 2024

Eva Okonofua (Senior Programme Advisor)

Martina Raytchinova (Internationale Programme Director)

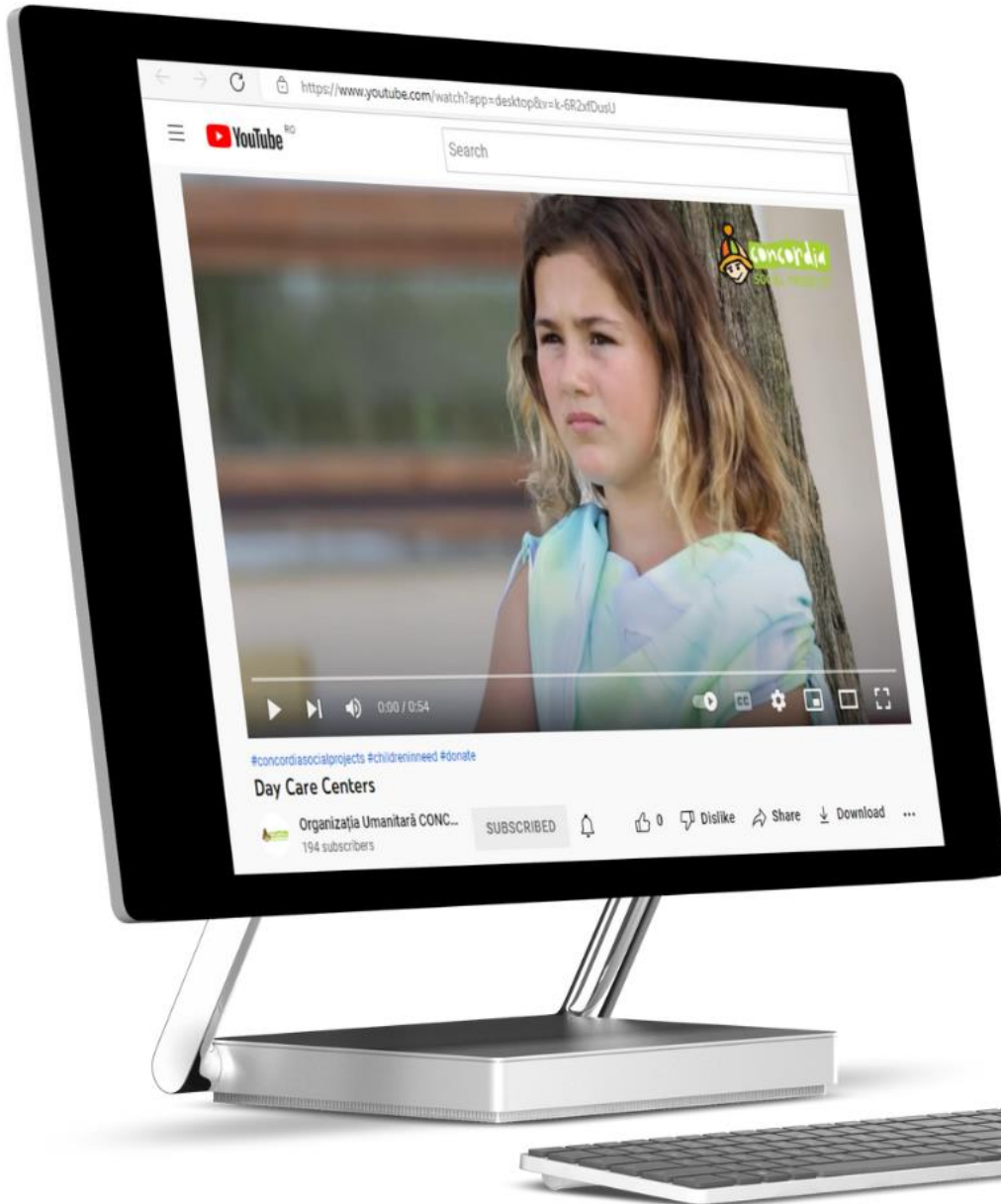
*Who saves one life,
saves the whole world*



Workshop Agenda and Objectives



- ✓ Introduction of the holistic Day Centre approach and its impact
- ✓ Word Café Sessions: 3 Rounds of discussion
 - *Round 1: Understanding Challenges*
 - *Round 2: Collaborative Approach*
 - *Round 3: Practical Implementation*
- ✓ Plenary Discussion and Synthesis
- ✓ Conclusion and Next Steps
- ✓ Informal Networking



VIDEO PRESENTATION



<https://www.youtube.com/watch?v=k-6R2xfDusU>

DAY CENTRES AS AN INTEGRATED INTERVENTION MODEL FOR CHILDREN AND FAMILIES



DAY CENTRES' OBJECTIVES

- ✓ Supporting families for the educational integration of their children and school success / prevention of school dropout.
- ✓ Acquiring life skills for children in the day center to support their educational and social integration.
- ✓ Work in the community: Prevention of family separation, child abandonment, domestic violence, and early marriages.
- ✓ "School for parents": Advising families, activating and involving parents, improving collaboration with local institutions and relevant stakeholders.

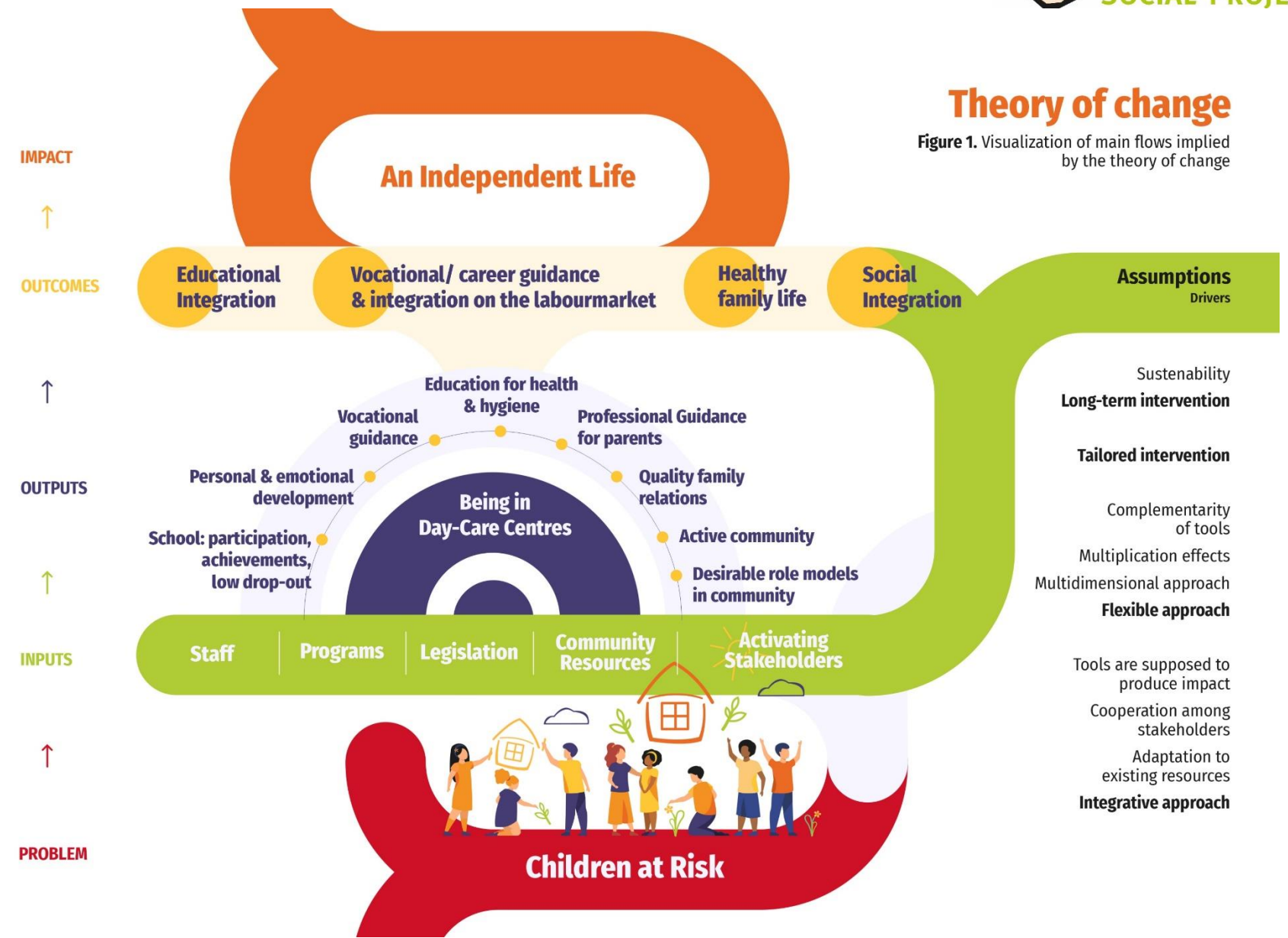


CONCORDIA'S DAY CENTRES THEORY OF CHANGE: On the way to an independent life



Theory of change

Figure 1. Visualization of main flows implied by the theory of change



The Intervention Model of CONCORDIA's Day Care Centers for children and families in difficulty

01. Social

- A hot meal for the children in the center
- Housing support
- Food packages for families
- Support to obtain documents
- Support accessing social assistance facilities or rights

02. Educational

- Early education support
- Remedial education
- After school programs
- Artistic activities
- Sport activities
- Other recreational activities

04. Family

- Integrated approach based on identified needs
- Daily presence in the community
- School for Parents

03. Vocational

- Professional training for parents
- Support the access to basic education for parents and other adults in the community (**Second Chance** programs)
- Vocational counseling for children
- Vocational counseling for parents
- Placement on the labor market and job-coaching



Psychological / Speech therapy

- Counseling parents
- Counseling children



Medico-Sanitary

- Children's health education
- Parent health education
- Health monitoring
- Information campaigns



Community

- Support kindergartens and schools
- Partnerships with local authorities in the social field
- Mobile teams to identify needs



STUDIU DE IMPACT AL CENTRELOR DE ZI CONCORDIA ROMÂNIA

BUCUREȘTI,
DECEMBRIE 2021

Bogdan VOICU
Claudia PETRESCU
Eugen GLĂVAN
Adriana NEGUȚ

Acest raport concretizează analiza impactului centrelor de zi **Casa Alexandra** și **Casa Cristina**, implementate de **Organizația Umanitară CONCORDIA**.

Analiza se referă la impactul asupra primelor generații de beneficiari (2013-2016) și are ca scop identificarea potențialelor căi de îmbunătățirii a activității centrelor de zi. Textul se concentrează pe descrierea celor observate și dezvoltă câteva recomandări de acțiune în vederea monitorizării permanente și a realizării de evaluări de impact folosind sistemul de înregistrări pe care îl sugerăm.

MAIN CONCLUSIONS OF THE IMPACT STUDY

EDUCATIONAL IMPACT



- ✓ The impact of the educational services offered in CONCORDIA is felt on all three levels of the intervention:
 - at the **individual level** (children): by reducing school dropout, improving school results;
 - at the **family level**: by making parents responsible and more involved in children's school life;
 - at the **community level**: educational units benefited from support for improving the infrastructure and the quality of the educational act.
- ✓ High impact, **the participants as a whole achieve higher school performance** than expected given the risk situations in which they find themselves.
- ✓ Early school dropout is substantially reduced.

FAMILY-LEVEL IMPACT



- ✓ The integrated intervention, which aimed at the well-being of the child and his family, is effective as a whole.
- ✓ Activities carried out together with parents led to **improvements in family relationships**.
- ✓ Impact on the prevention of **child separation from the family** by providing educational and material support.
- ✓ **Reducing the number of child pregnancies** in the communities where CONCORDIA provides support.
- ✓ The main **agent of change** is the child, who adopted other values, and slowly introduce them into the family environment.
- ✓ Domestic violence, the intervention raised awareness among the family members; Children know their rights.



IMPACT ON THE SATISFACTION WITH LIFE



- ✓ Youth and young adults are **largely satisfied** with their lives, especially after the intervention in CONCORDIA's day center support.
- ✓ Overall, all interviewed participants and their families are satisfied with the activity of CONCORDIA and report **improved well-being**.
- ✓ The dominant representation is that of a positive impact of **CONCORDIA on everyone's subjective state of happiness**.
- ✓ Day Centres constitute a familiar environment, in which the participants feel comfortable, which constitutes a positive premise for their development.



World Café Sessions

Setting the Stage



Round 1: *What are the key challenges faced by children and families in poverty in your community?*

Round 2: *How can different services collaborate to address these challenges?*

Round 3: *What practical steps can we take to implement holistic day centres in our regions?*

Format of the World Café:

- ✓ Small groups, 4-6 people per table
- ✓ Each session consists of 3 rounds of discussion (12 Minutes each)
- ✓ Each table documents their insight
- ✓ Participants rotate tables



PLENARY SESSION

- ✓ Share key insights from each table
- ✓ Highlight common themes, innovative ideas and action steps
- ✓ Capture main points
- ✓ Conclusion and next steps
- ✓ Provide additional resources and contact information
- ✓ Exchange contact and explore potential collaboration



T H A N K
Y O U

